



Samband íslenskra sveitarfélaga

# FJÁRHAGSSTAÐA HAFNA 2016

**Hafnafundur 2016**

**Húsavík í Norðurþingi 21. september 2017**

**Sigurður Á. Snævarr**

**sviðsstjóri hag- og upplýsingasviðs  
Sambands íslenskra sveitarfélaga**

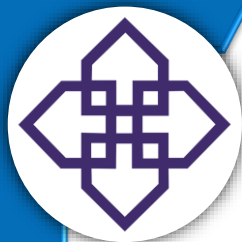


| Nafn hafnarsjóðs:                               | Fjárhæðir í þús.kr.       |      |      |                |
|---|---------------------------|------|------|----------------|
|   | Ársreikningur             |      |      | Fjárhagsáætlun |
|   | 2014                      | 2015 | 2016 | 2017           |
| <b>Rekstrarreikningur</b>                       |                           |      |      |                |
| <i>Rekstrartekjur</i>                           |                           |      |      |                |
| þ.a. tekjur af aflagjöldum                      |                           |      |      |                |
| þ.a. tekjur af vörugjöldum                      |                           |      |      |                |
| þ.a. tekjur vegna skemmtiferðaskipa             |                           |      |      |                |
| <i>Rekstrargjöld</i>                            |                           |      |      |                |
| þ.a. laun og tengd gjöld                        |                           |      |      |                |
| þ.a. Breyting lífeyrisskuldbindingar            |                           |      |      |                |
| þ.a. annar rekstrarkostnaður                    |                           |      |      |                |
| þ.a. afskriftir                                 |                           |      |      |                |
| <i>Fjármunatekjur og (fjármagnsgjöld)</i>       |                           |      |      |                |
| þ.a. vaxtatekjur - vaxtagjöld og verðbætur      |                           |      |      |                |
| <i>Rekstrarniðurstaða</i>                       |                           |      |      |                |
| <b>Efnahagsreikningur</b>                       |                           |      |      |                |
| <i>Fastfjármunir</i>                            |                           |      |      |                |
| þ.a. varanlegir rekstrarfjármunir               |                           |      |      |                |
| þ.a. áhættufjármunir og langtíma kröfur         |                           |      |      |                |
| þ.a. gagnvart sveitarsjóði                      |                           |      |      |                |
| <i>Veltufjármunir</i>                           |                           |      |      |                |
| þ.a. gagnvart sveitarsjóði                      |                           |      |      |                |
| <i>Eigið fé</i>                                 |                           |      |      |                |
| <i>Skuldbindingar</i>                           |                           |      |      |                |
| þ.a. lífeyrisskuldbindingar                     |                           |      |      |                |
| <i>Langtímaskuldir</i>                          |                           |      |      |                |
| þ.a. gagnvart sveitarsjóði                      |                           |      |      |                |
| <i>Skammtímaskuldir</i>                         |                           |      |      |                |
| þ.a. gagnvart sveitarsjóði                      |                           |      |      |                |
| <b>Sjóðsstreymisfirlit</b>                      |                           |      |      |                |
| <i>Handbært frá rekstri</i>                     |                           |      |      |                |
| þ.a. veltufé frá rekstri                        |                           |      |      |                |
| <i>Fjárfestingarhreyfingar</i>                  |                           |      |      |                |
| þ.a. fjárfesting í varanlegum rekstrarfjármunum |                           |      |      |                |
| <i>Fjármögnunarhreyfingar</i>                   |                           |      |      |                |
|   |                           |      |      |                |
|   |                           |      |      |                |
|   | Fjárhæðir í milljónum kr. |      |      |                |
|   | 2017                      | 2018 | 2019 | 2020           |
| <b>Framkvæmdaáætlun</b>                         |                           |      |      |                |
| <i>Fyrirhugaðar framkvæmdir</i>                 |                           |      |      |                |



# YFIRLIT UM REKSTUR HAFNARSJÓÐA MILLJÓNIR KRÓNA

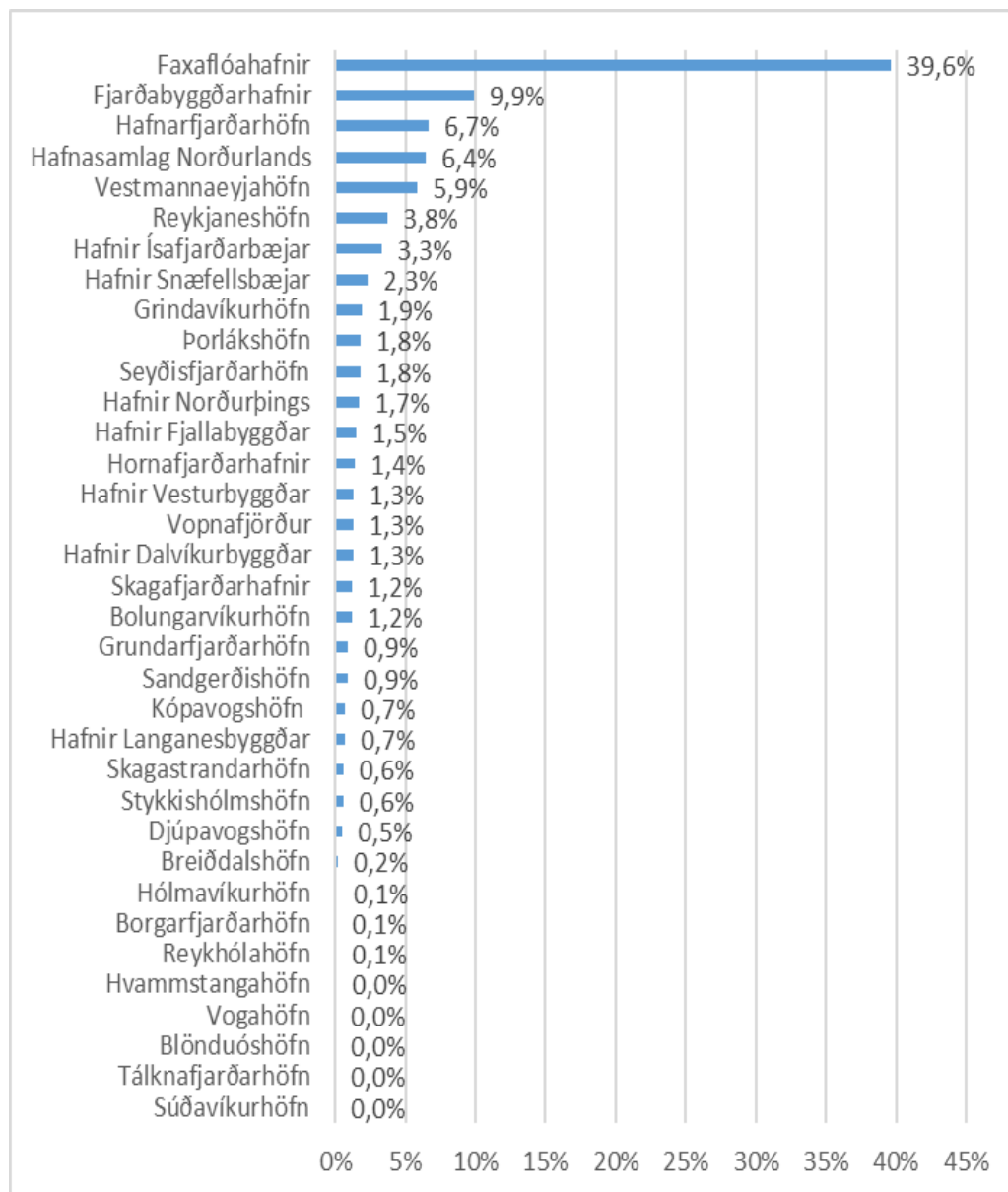
|                     | Tekjur | Aflagjöld | Rekstrar-<br>gjöld | Framlegð | Rekstrar-<br>niðurstaða | Veltufé<br>frá<br>rekstri | Skuldir<br>og skuld-<br>bindingar |
|---------------------|--------|-----------|--------------------|----------|-------------------------|---------------------------|-----------------------------------|
| 2015                | 8.144  | 1.886     | 4.742              | 3.402    | 1.829                   | 3.282                     | 15.780                            |
| 2016                | 8.601  | 1.872     | 5.176              | 3.424    | 1.569                   | 3.241                     | 16.524                            |
| 2017                | 8.624  | 1.852     | 5.345              | 3.279    | 1.414                   |                           | 16.257                            |
| Breyting<br>'15-'16 | 5,6%   | -0,8%     | 9,2%               | 0,6%     | -14,2%                  | -1,3%                     | 4,7%                              |
| Breyting<br>'16-'17 | 0,3%   | -1,1%     | 3,3%               | -4,2%    | -9,9%                   |                           | -1,6%                             |

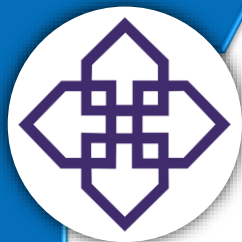


# TEKJUR HAFNARSJÓÐA

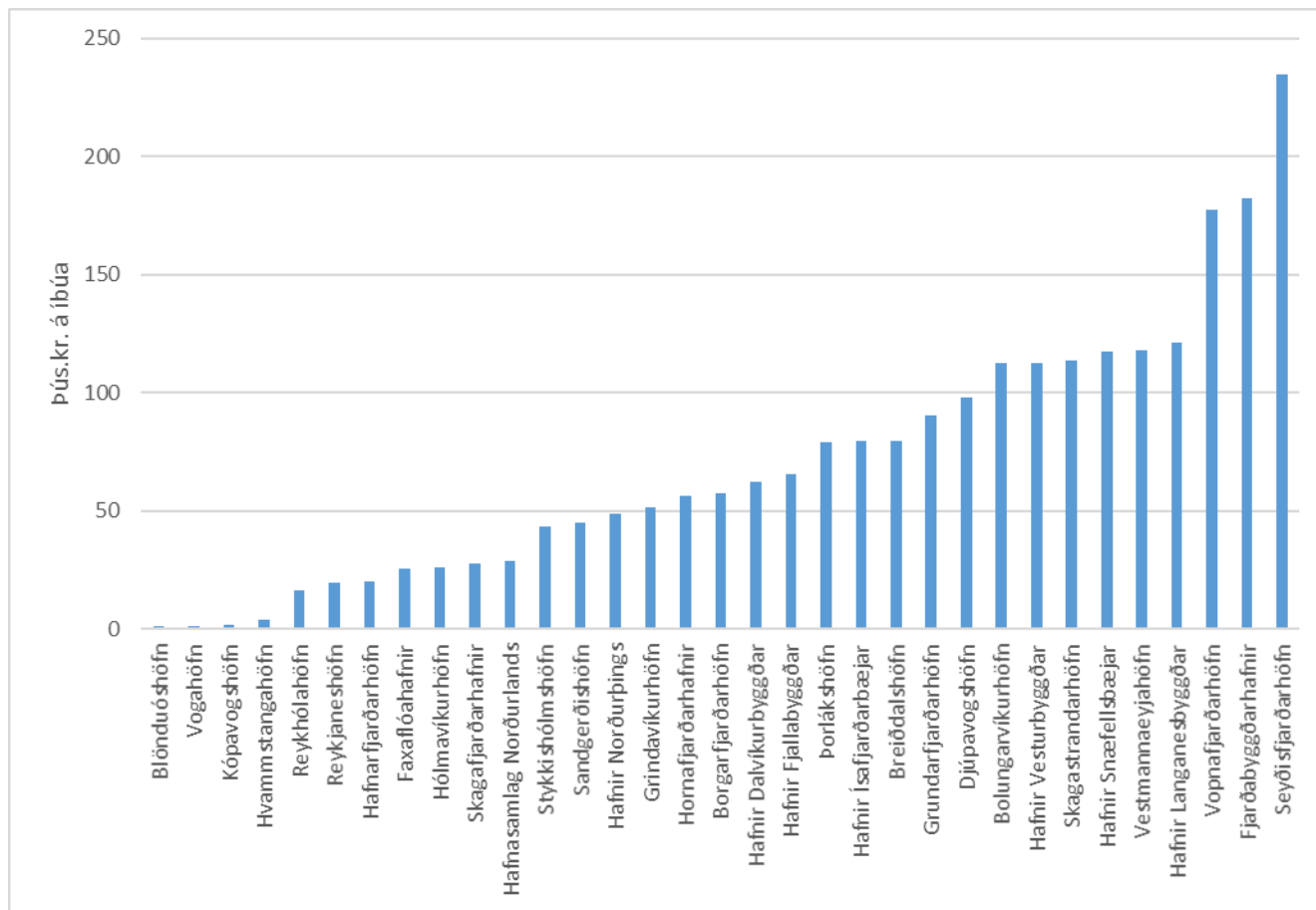


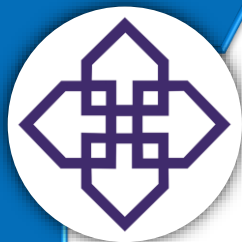
## Hluttur í heildartekjum allra hafnarsjóða



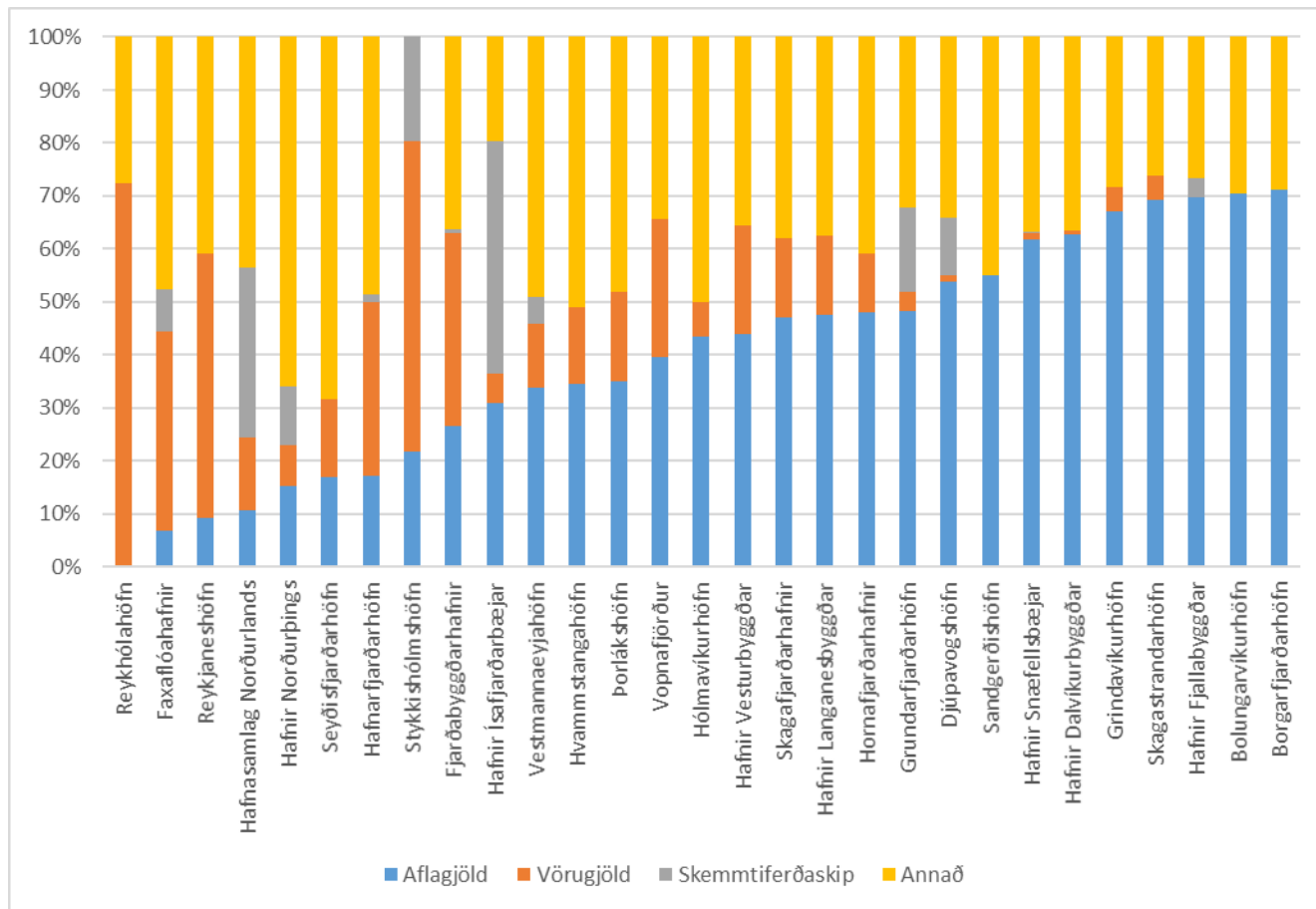


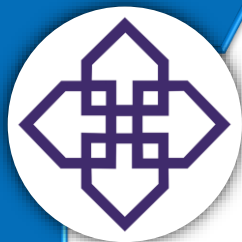
# TEKJUR HAFNARSJÓÐA Á MANN



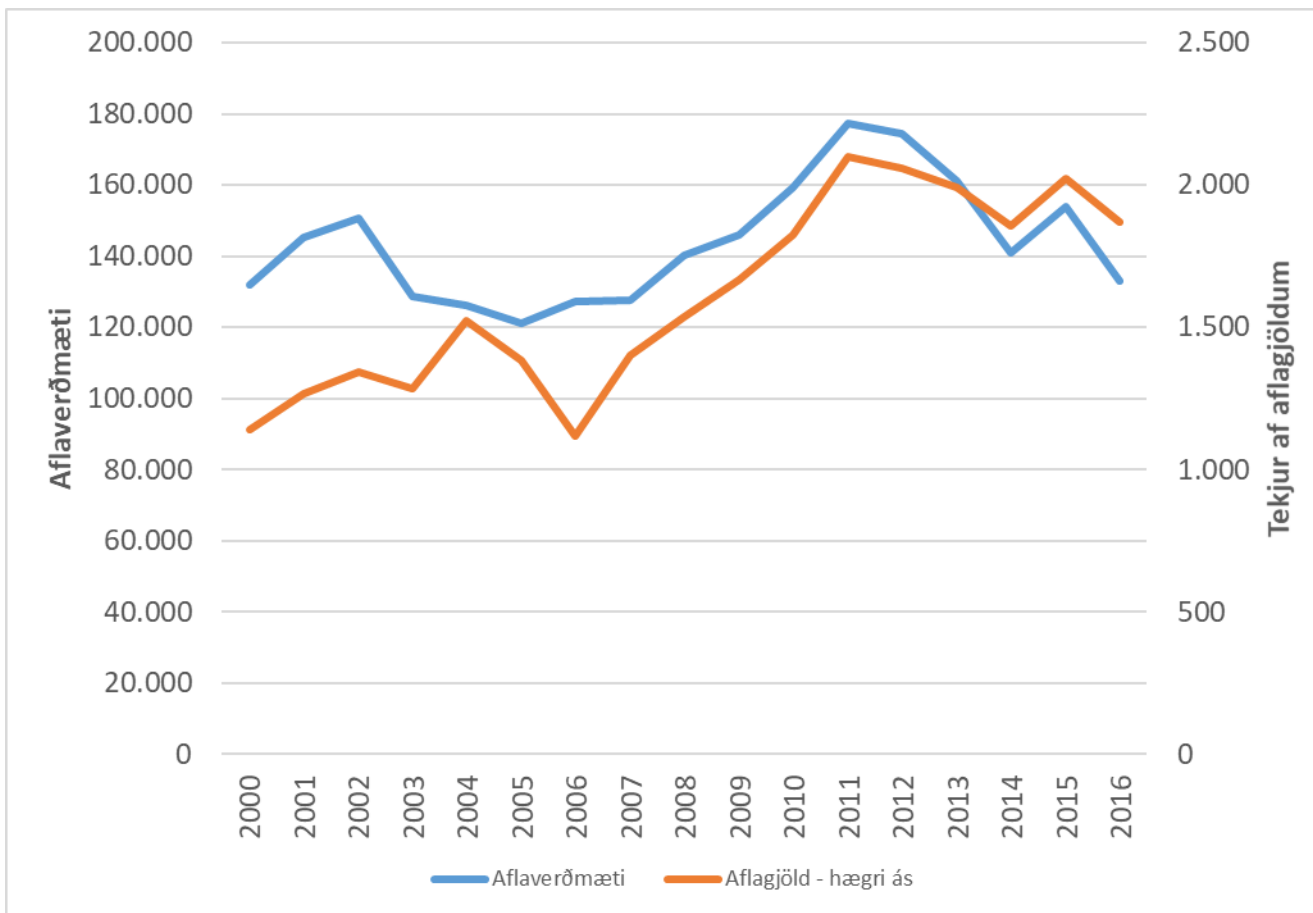


# SAMSETNING TEKNA HAFNARSJÓÐA

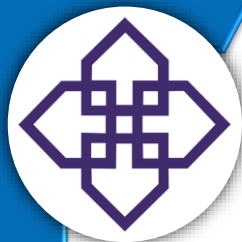




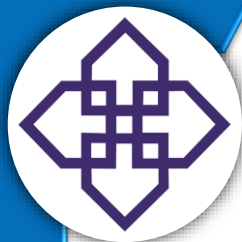
# AFLAVERÐMÆTI OG AFLAGJÖLD – Á FÖSTU VERÐLAGI







# AFKOMA HAFNARSJÓÐA

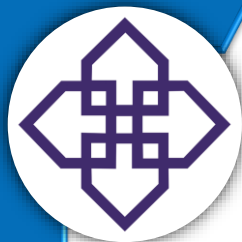


## REKSTRARAFGANGUR, M.KR.

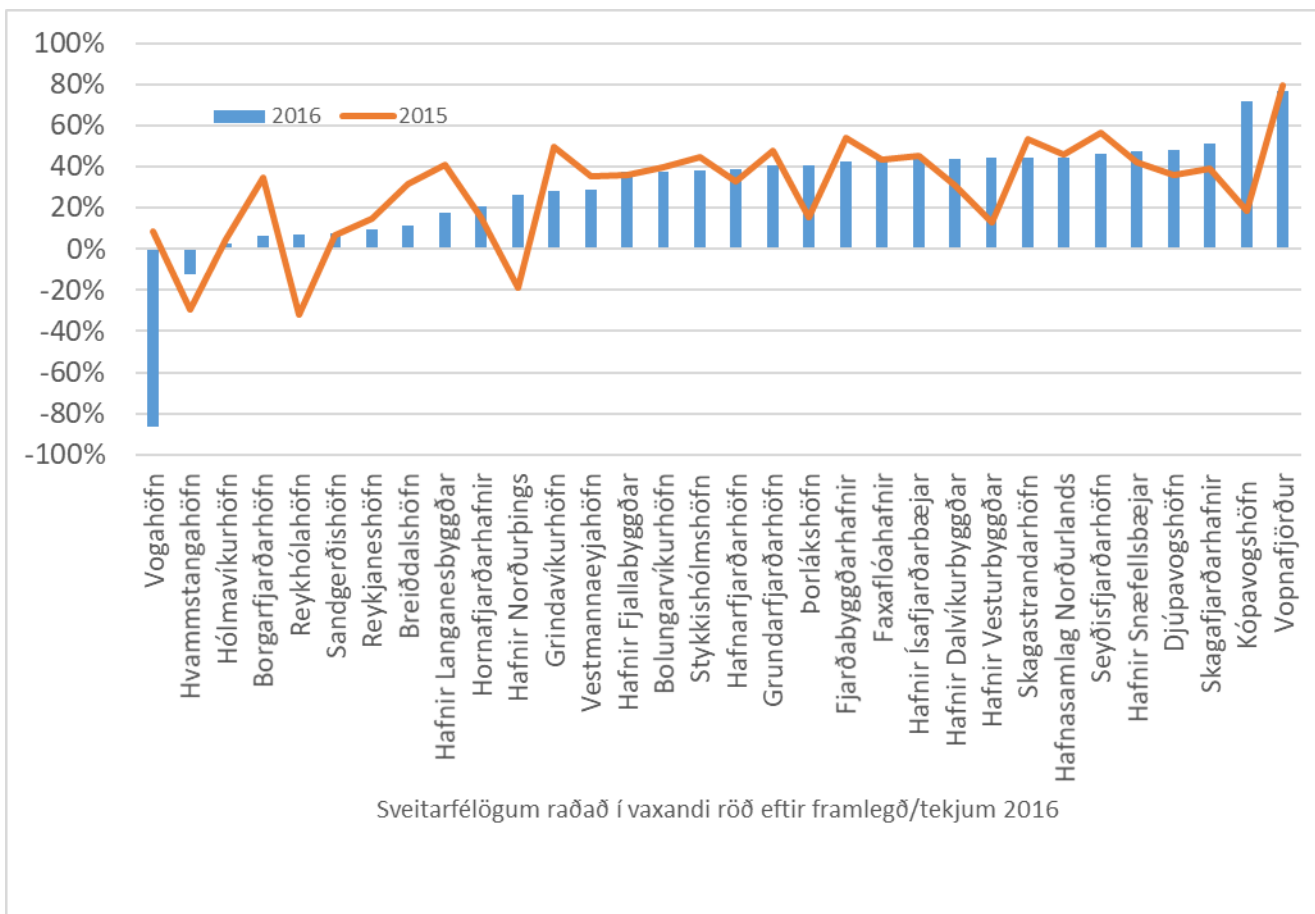
|                                  | 2014  | 2015  | 2016  |
|----------------------------------|-------|-------|-------|
| Afkoma hafna sem skiluðu hagnaði | 1.678 | 2.342 | 2.049 |
| Afkoma hafna sem skiluðu tapi    | -582  | -514  | -483  |
| Rekstrarafröngur alls            | 1.096 | 1.829 | 1.604 |
| % af tekjum                      | 14,9% | 22,5% | 18,2% |

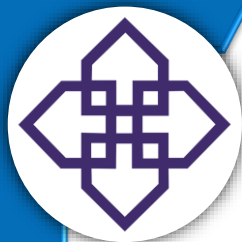
## VELTUFÉ FRÁ REKSTRI, M.KR.

|                     | 2014  | 2015  | 2016  |
|---------------------|-------|-------|-------|
| Veltufé frá rekstri | 2.996 | 3.282 | 3.241 |
| % af tekjum         | 40,7% | 40,3% | 37,7% |

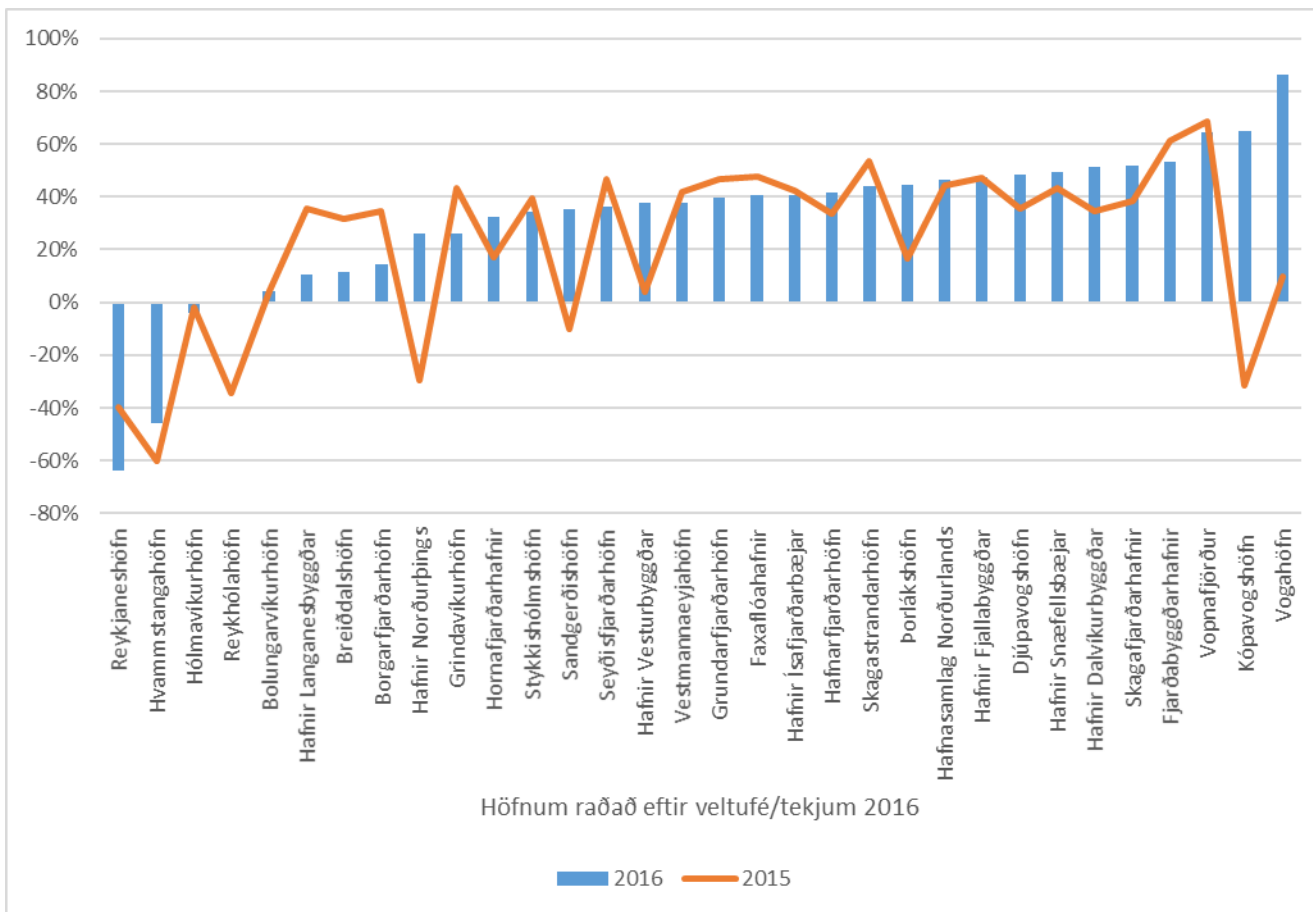


# FRAMLEGÐ 2015 OG 2016 Í HLUTFALLI VIÐ TEKJUR



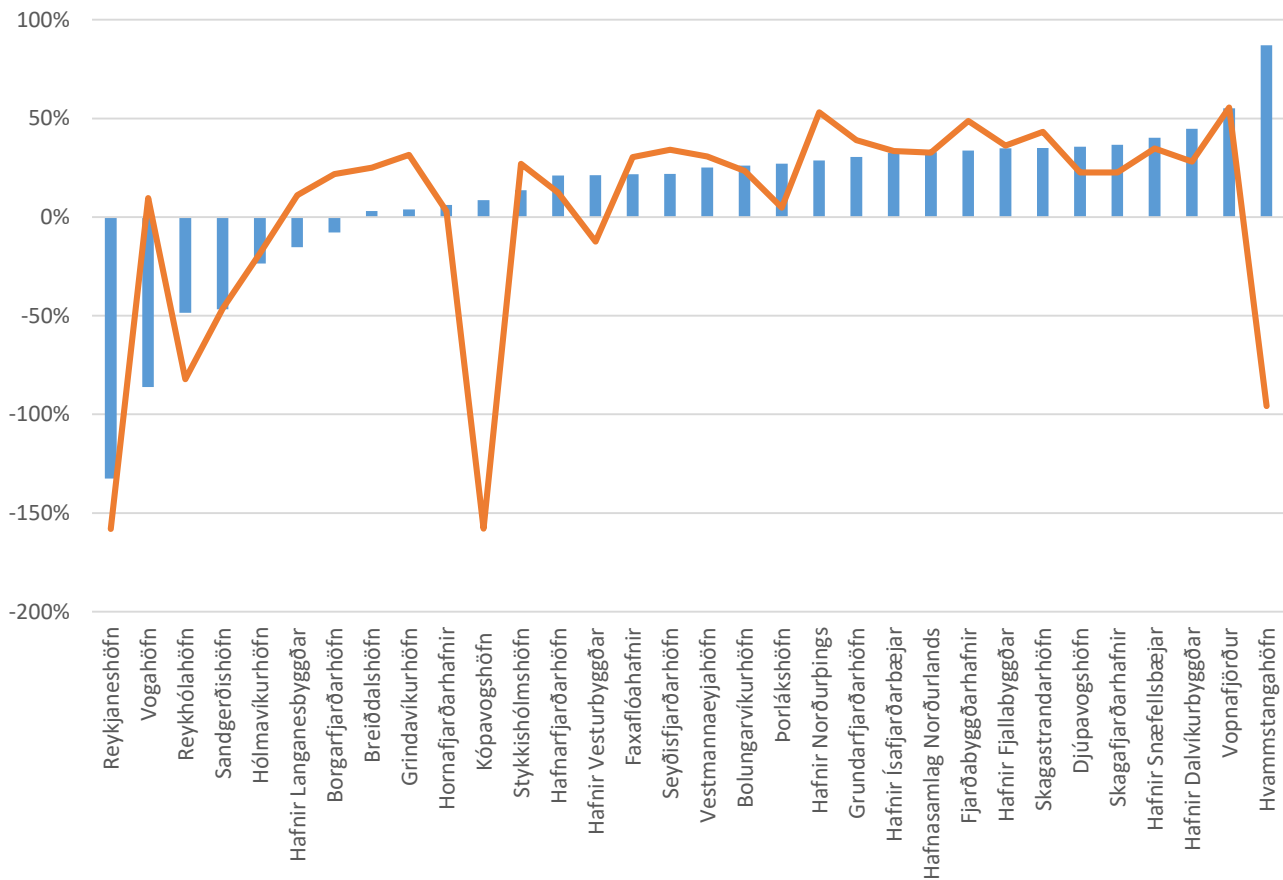


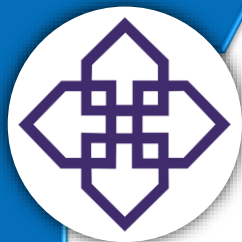
# VELTUFÉ FRÁ REKSTRI % AF TEKJUM



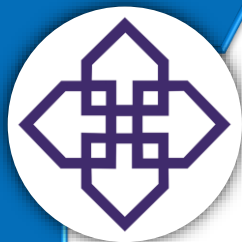


# REKSTRARAFGANGUR



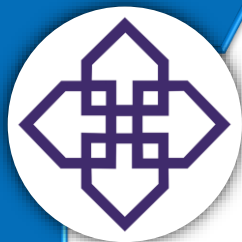


# FJÁRFESTING OG FJÁRMÖGNUN



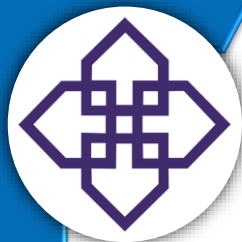
# FJÁRFESTING Í VARANLEGU OG FJÁRMÖGNUNARHREYFINGAR M.KR.

|  | 2014  | 2015  | 2016  |
|--|-------|-------|-------|
| Fjárfesting í varanlegum rekstrarfjármunum | 2.060 | 2.998 | 2.632 |
| % af tekjum                                | 28%   | 37%   | 31%   |
| Fjármögnunarahreyfingar                    | 828   | 1.159 | 645   |
| % af tekjum                                | 11,3% | 14,2% | 7,5%  |



# SKULDIR OG EIGIÐ FÉ





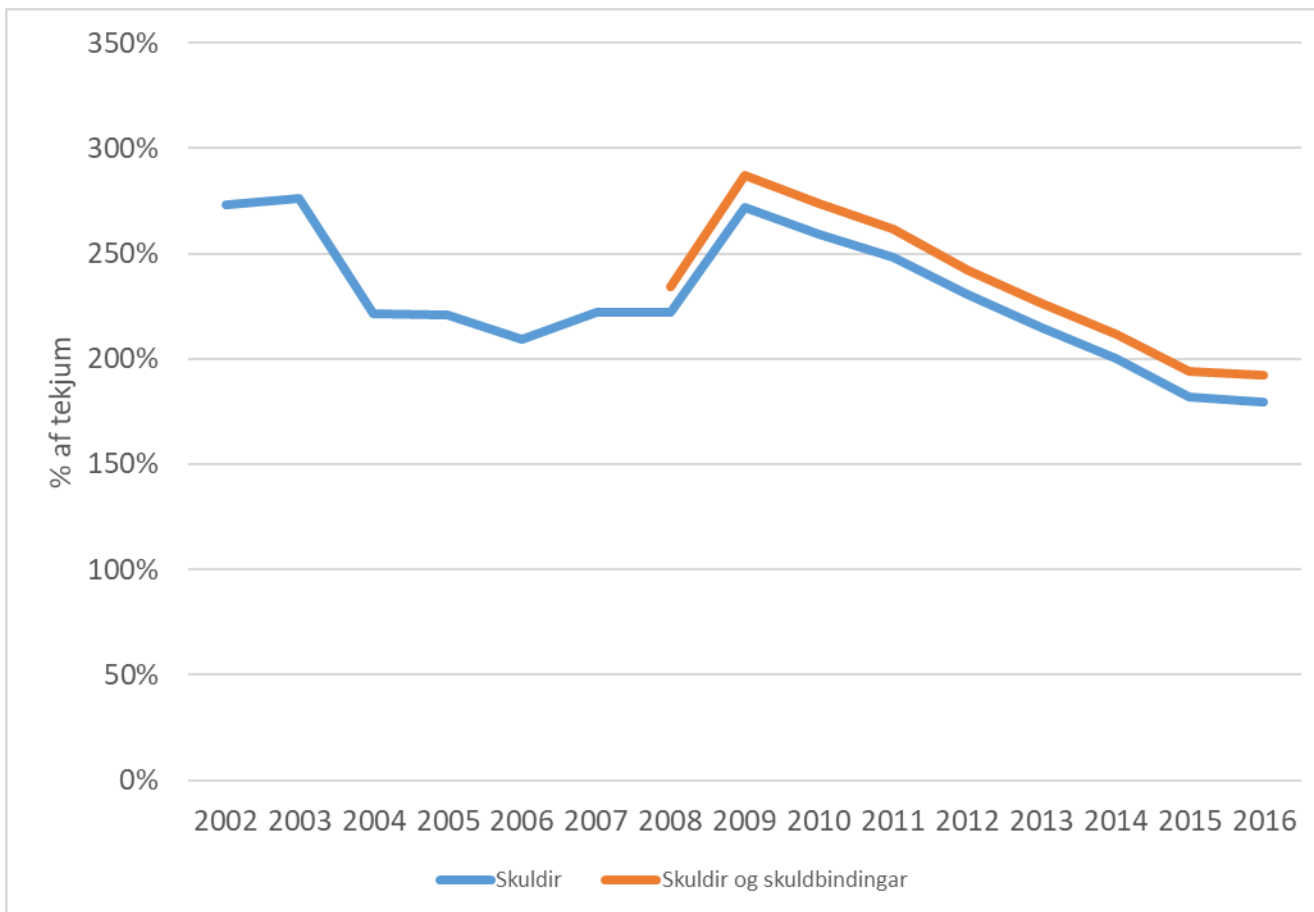
## SKULDIR OG EIGIÐ FÉ

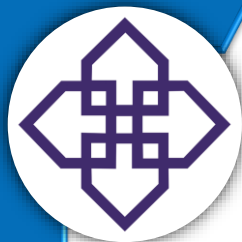
|                           | 2014   | 2015   | 2016   |
|---------------------------|--------|--------|--------|
| Skuldir og skuldbindingar | 15.801 | 15.999 | 16.696 |
| % af tekjum               | 214,7% | 196,5% | 194,1% |

|             | 2014   | 2015   | 2016   |
|-------------|--------|--------|--------|
| Eigið fé    | 16.745 | 18.265 | 19.516 |
| % af eignum | 51,4%  | 53,3%  | 53,3%  |

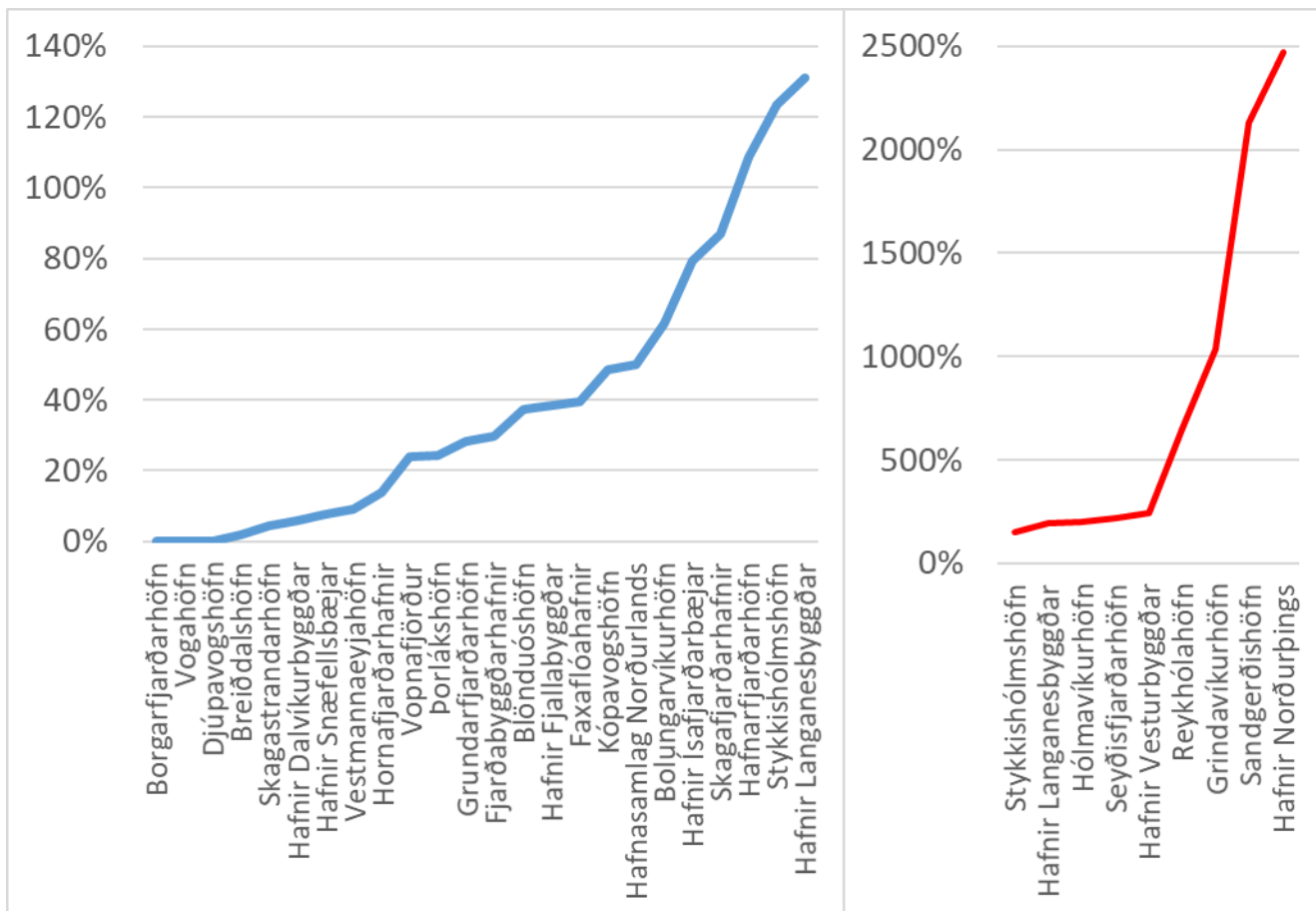


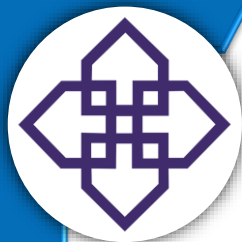
# SKULDIR HAFA LÆKKAD Í HEILD





# MARGIR HAFNARSJÓÐIR SKULDA MIKIÐ





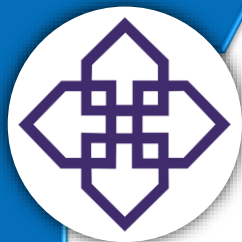
**NÆSTU ÁR**



## FJÁRHAGSÁÆTLUN 2017

Gert ráð fyrir að

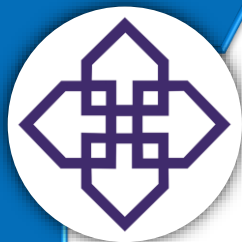
- tekjur hækki lítillega
- rekstrarafgangur minnki um 2 pst af tekjum
- veltufé dragist saman um 5,7 pst af tekjum
- fjárfesting aukist um 1 ma.kr.
- skuldir og skuldbindingar minnki um 3,5 pst af tekjum



# FRAMKVÆMDIR

Spurt um „fyrirhugaðar framkvæmdir“  
Niðurstaða (í m.kr.)

| 2017  | 2018  | 2019  | 2020  |
|-------|-------|-------|-------|
| 4.320 | 4.282 | 4.072 | 3.670 |



**TAKK FYRIR**