



Samband íslenskra sveitarfélaga

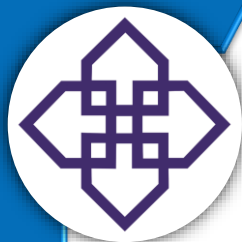
# FJÁRHAGSSTAÐA HAFNA

**Hafnasambandsþing 2018**

**Sigurður Á. Snævarr**

**sviðsstjóri hag- og upplýsingasviðs  
Sambands íslenskra sveitarfélaga**

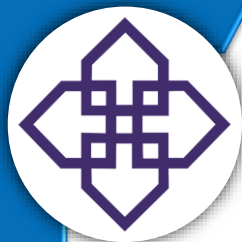




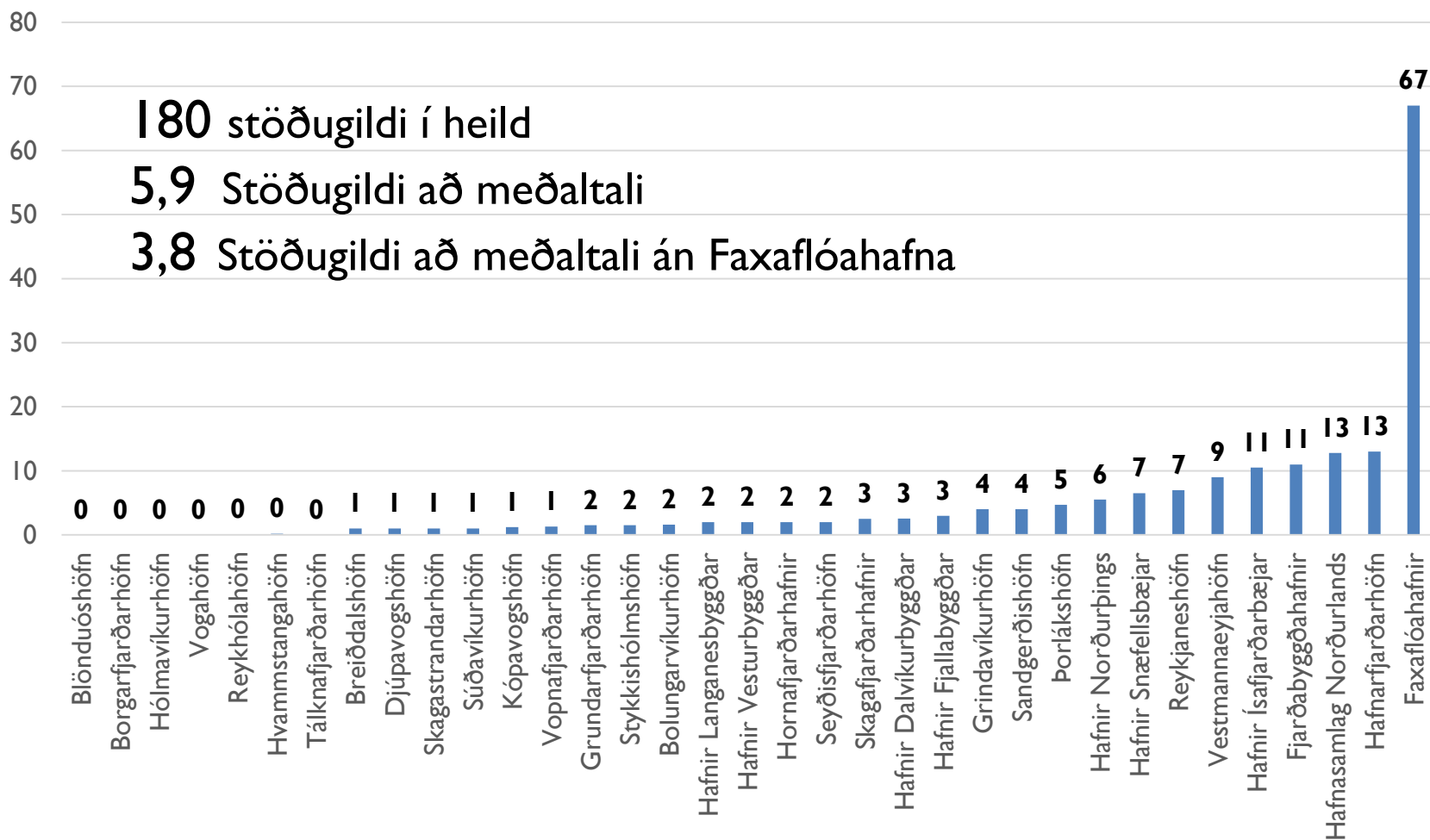
## Bakgrunnsupplýsingar

2017

Hver var fjöldi stöðugilda hjá hafnarsjóðnum?	
Hver var heildarlengd hafnarbakka?	
Hversu margir dráttarbáta eru í eigu sjóðsins?	
Hver var heildartogkraftur dráttarbátanna?	
Hver var fjöldi hafnarvoga?	
Hversu mikill var útflutningur í tonnum?	
Hversu mikill var innflutningur í tonnum?	
Hversu miklum afla var landað (tonn)?	
Hversu mörg skip yfir 100 brt. komu til hafnarinnar?	

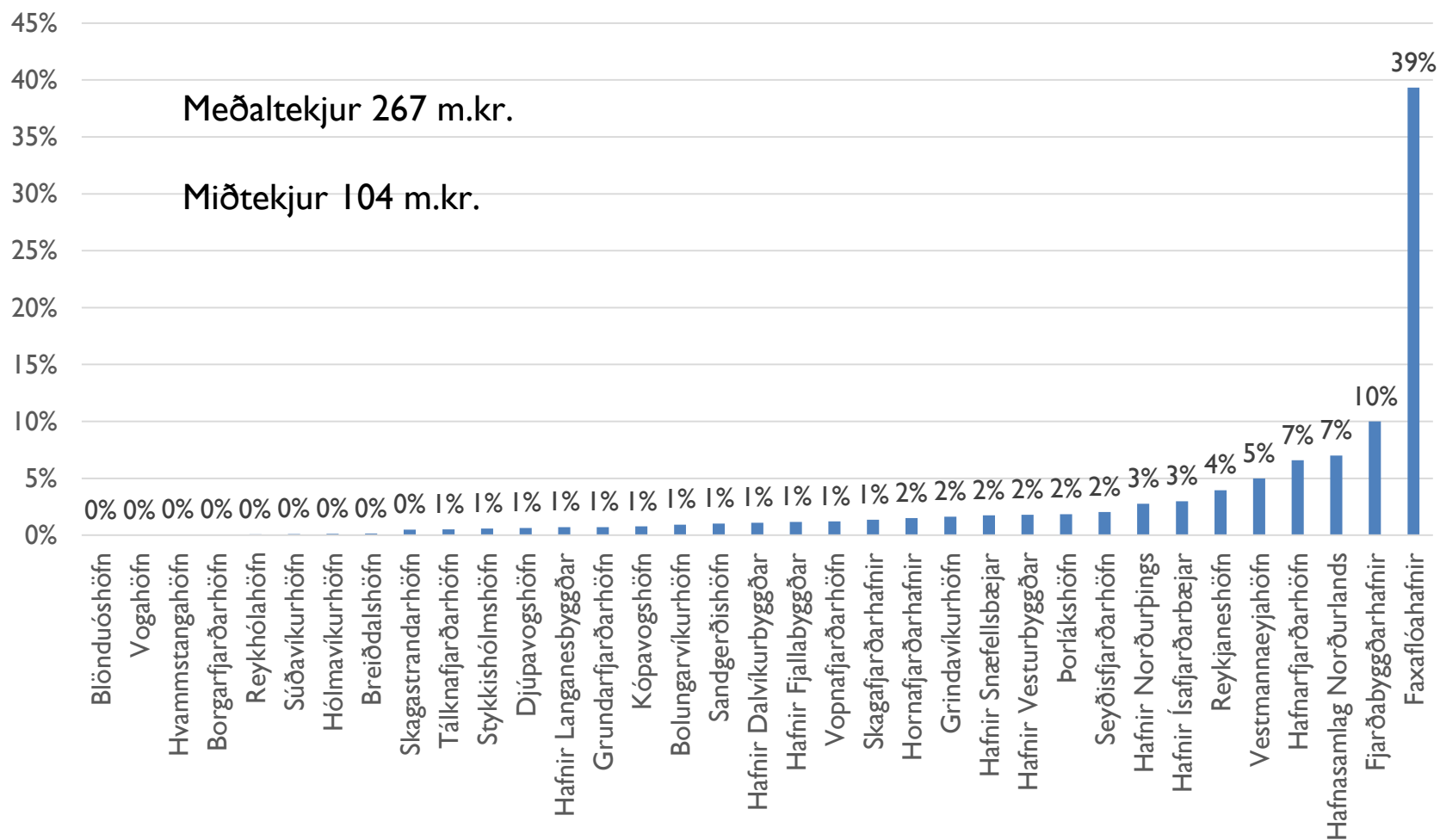


# STÖÐUGILDI HJÁ HAFNARSJÓÐUM





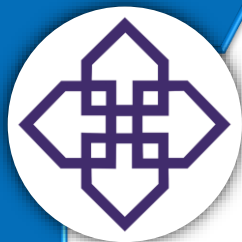
# TEKJUR HAFNARSJÓÐA, % AF HEILD



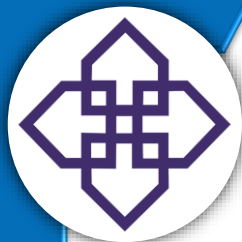


# YFIRLIT UM REKSTUR HAFNARSJÓÐA MILLJÓNIR KRÓNA

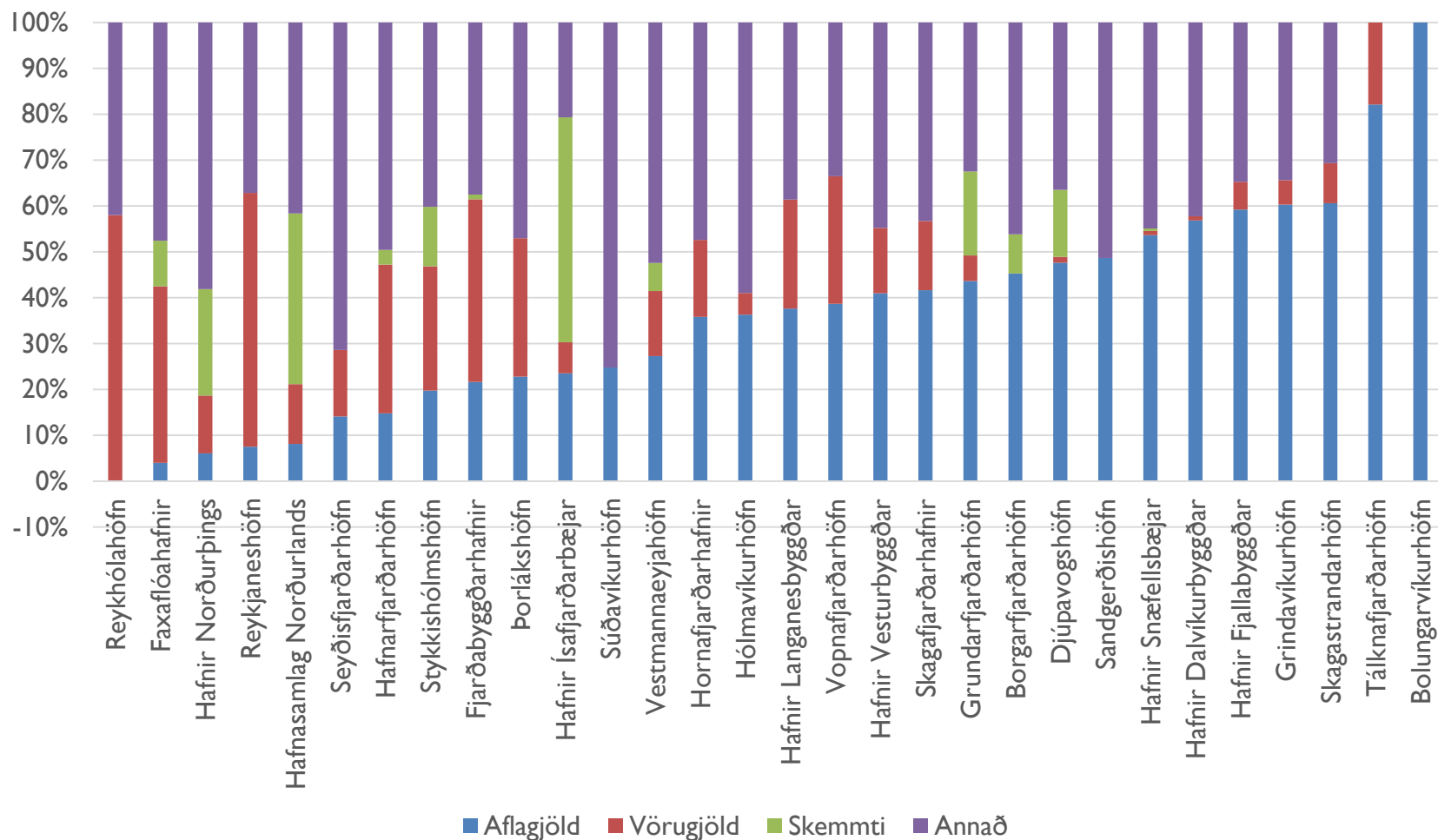
	Tekjur	Rekstrarniðurstaða		Veltufé frá rekstri		Skuldir og skuldbindingar	
		m.kr.	% af tekjum	m.kr.	% af tekjum	m.kr.	% af tekjum
2015	8.170	1.450	17,7%	3.190	39,0%	16.371	200,4%
2016	8.665	1.605	18,5%	3.403	39,3%	17.223	198,8%
2017	9.389	1.413	15,0%	3.244	34,5%	17.804	189,6%
Breyting 2016-2017							
m.kr.	724	-193		-159		581	
%	8,4%	-12,0%		-4,7%		3,4%	



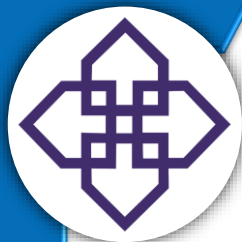
# TEKJUR HAFNARSJÓÐA



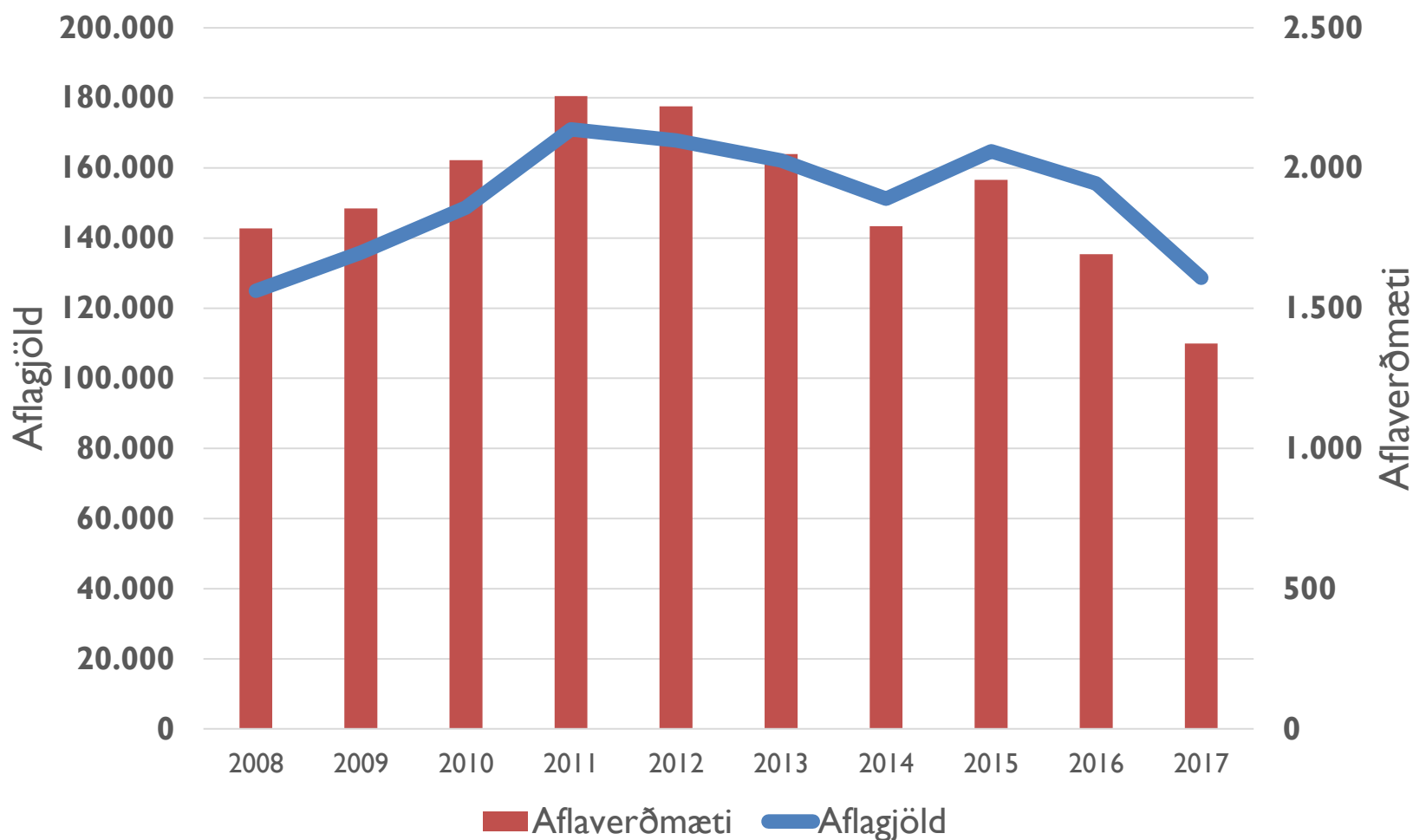
# SAMSETNING TEKNA HAFNARSJÓÐA

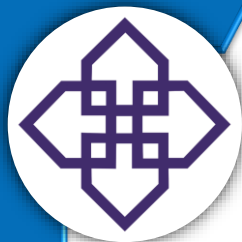






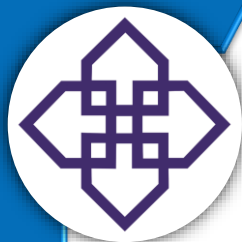
# AFLAVERÐMÆTI OG AFLAGJÖLD – Á FÖSTU VERÐLAGI 2017



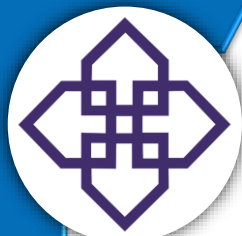


# ÁHRIF SKEMMTIFERÐASKIPA

	Skipakomur		Farþegar		Tekjur
	2016	2017	2016	2017	2017
Djúpavogshöfn	17	25	4.905	9.365	8.773
Faxaflóahafnir	114	135	98.676	128.275	365.767
Fjarðabyggðahafnir	4	7	2.188	4.121	9.523
Grundarfjarðarhöfn	27	26	10.861	11.142	12.287
Hafnarfjarðahöfn	10	15	3.912	7.635	19.833
Hafnarsjóður Fjallabygg	13	22	3.150	4.610	0
Hafnasamlag Norðurlar	104	155	84.606	115.565	244.500
Hafnarsjóður Norðurþir	20	33	4.755	6.971	60.526
Hafnarsjóður Ísafjarðarb	81	95	85.108	78.732	137.901
Seyðisfjarðarhöfn	32	42	16.139	19.973	0
Stykkishólms höfn	12	15	2.033	2.471	7.124
Vestmannaeyjahöfn	41	50	11.374	12.138	28.819
<b>Samtals</b>	<b>475</b>	<b>620</b>	<b>327.707</b>	<b>400.998</b>	<b>895.053</b>



# AFKOMA HAFNARSJÓÐA



## REKSTRARAFGANGUR, M.KR.

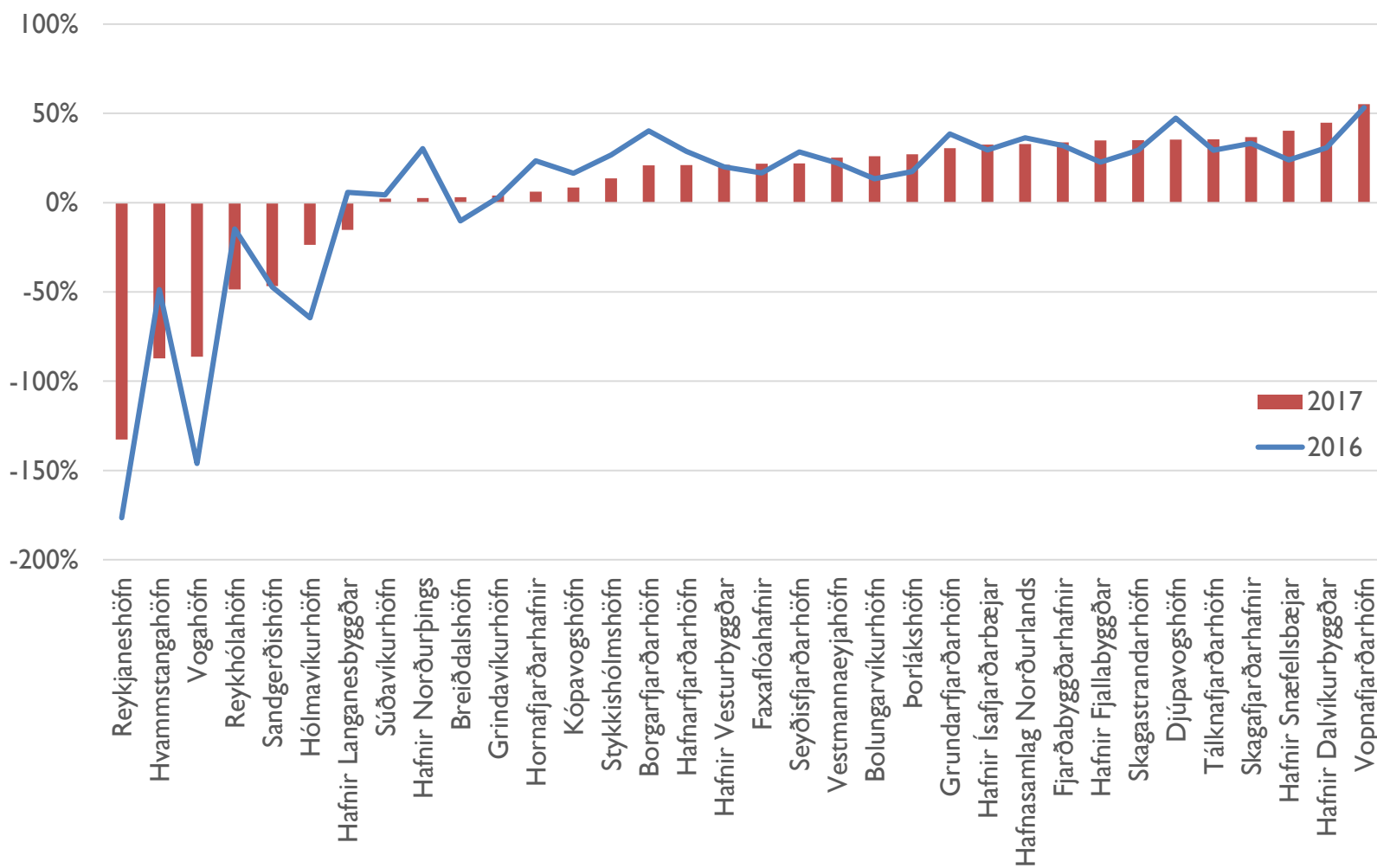
	2015	2016	2017
Afkoma hafna sem skiluðu hagnaði	2.004	2.057	2.086
Afkoma hafna sem skiluðu tapi	-554	-452	-673
Rekstrarafgangur alls	1.450	1.605	1.413
% af tekjum	17,7%	18,5%	15,0%

## VELTUFÉ FRÁ REKSTRI, M.KR.

	2015	2016	2017
Veltufé frá rekstri	3.412	3.403	3.244
% af tekjum	39%	39,4%	34,7%

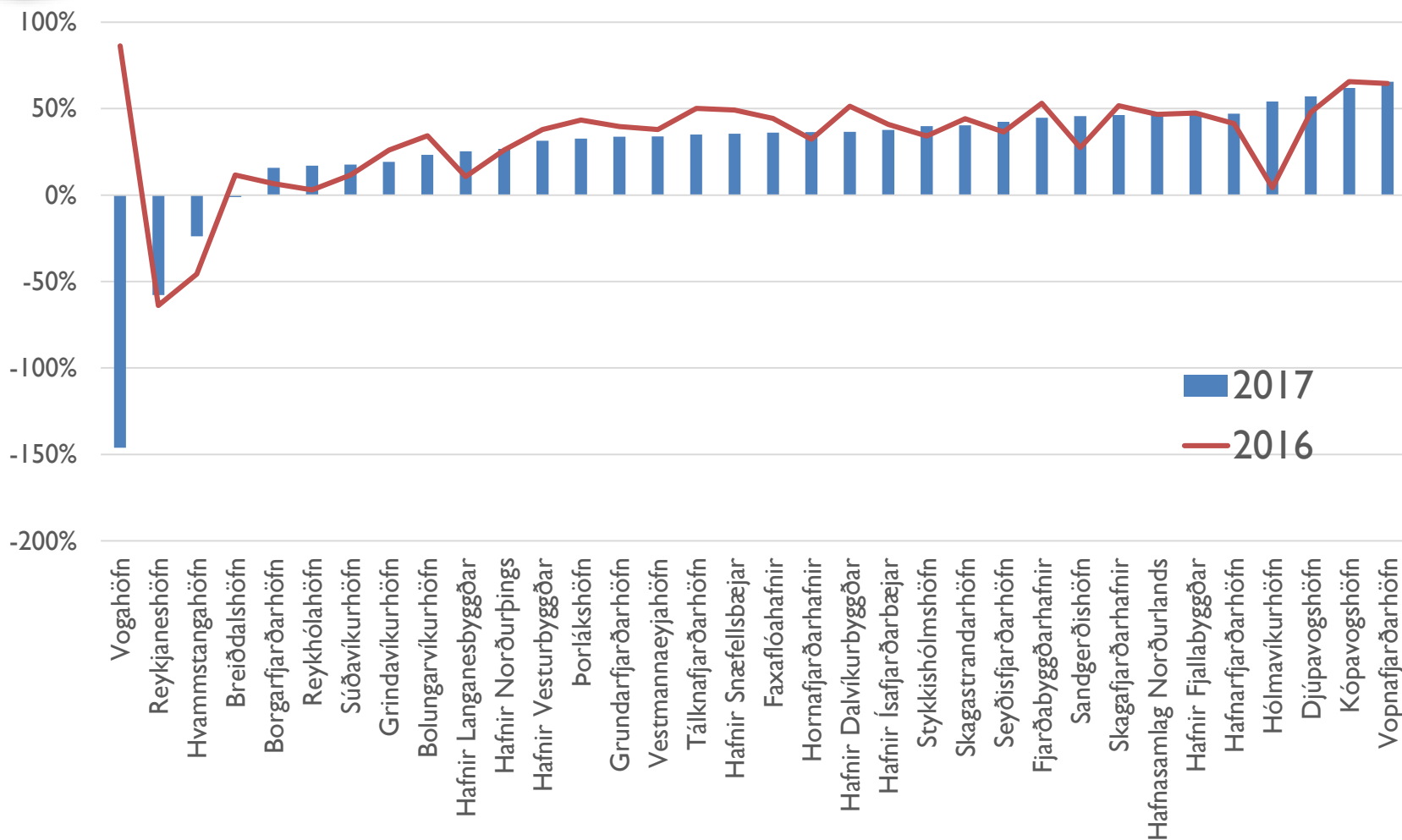


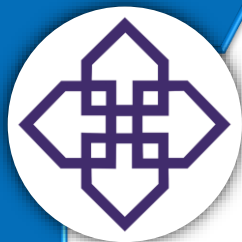
# REKSTRARAFGANGUR, % AF TEKJUM



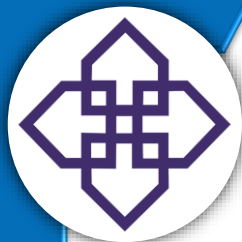


# VELTUFÉ FRÁ REKSTRI 2016 OG 2017, % AF TEKJUM





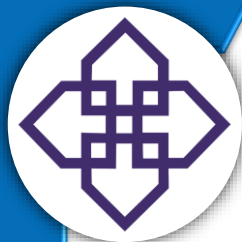
# FJÁRFESTING OG FJÁRMÖGNUN



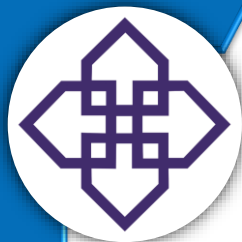
# FJÁRFESTING Í VARANLEGU OG FJÁRMÖGNUNARHREYFINGAR M.KR.

	<b>2015</b>	<b>2016</b>	<b>2017</b>
Fjárfesting í varanlegum rekstrarfjármunum	2.028	3.415	3.617
% af tekjum	28%	37%	31%
Breyting milli ára		68,4%	5,9%
Fjármögnunarahreyfingar	828	1.159	645
% af tekjum	11,3%	14,2%	7,5%

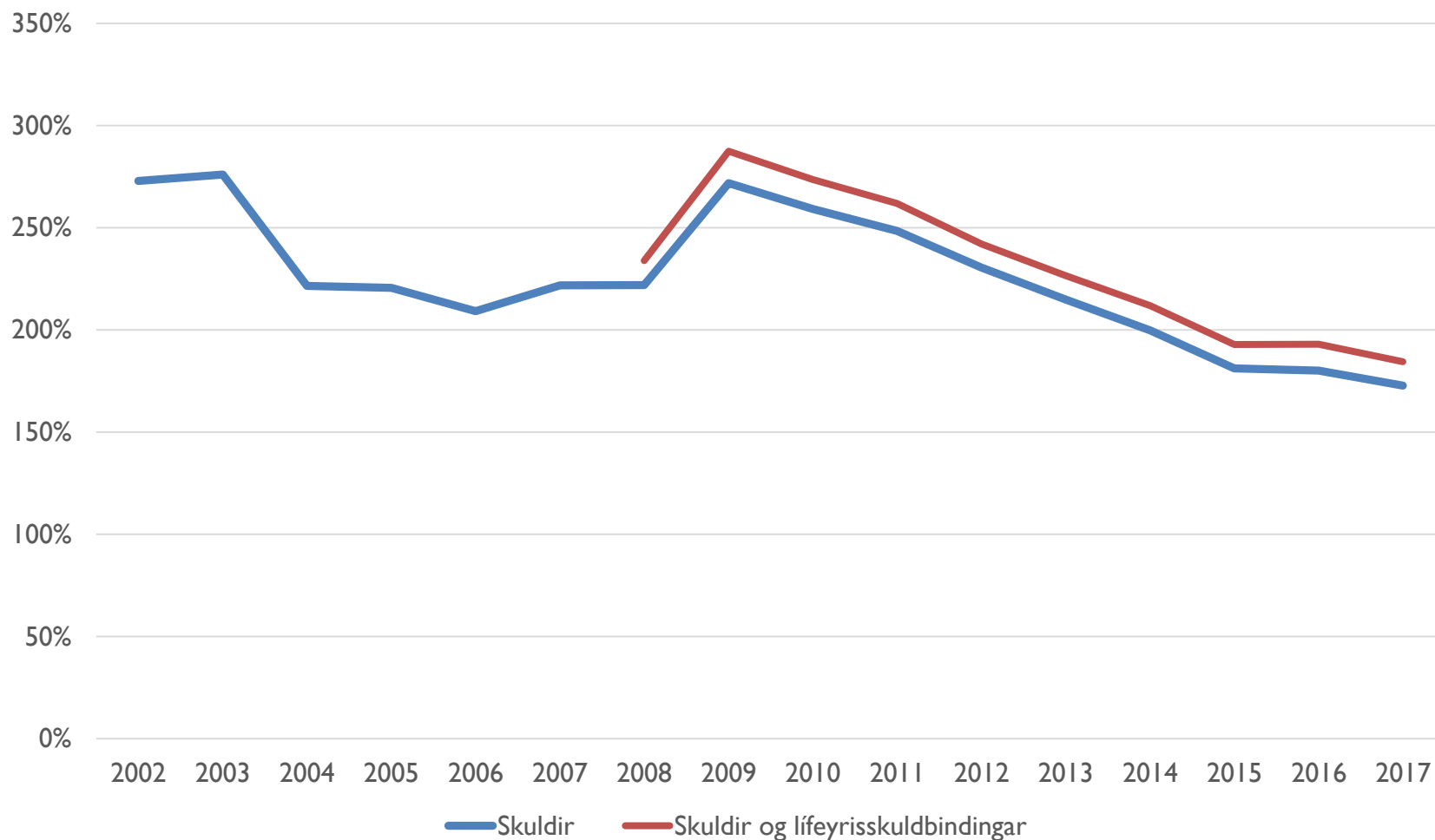


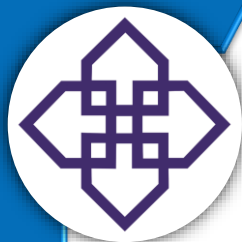


# SKULDIR OG SKULDBINDINGAR

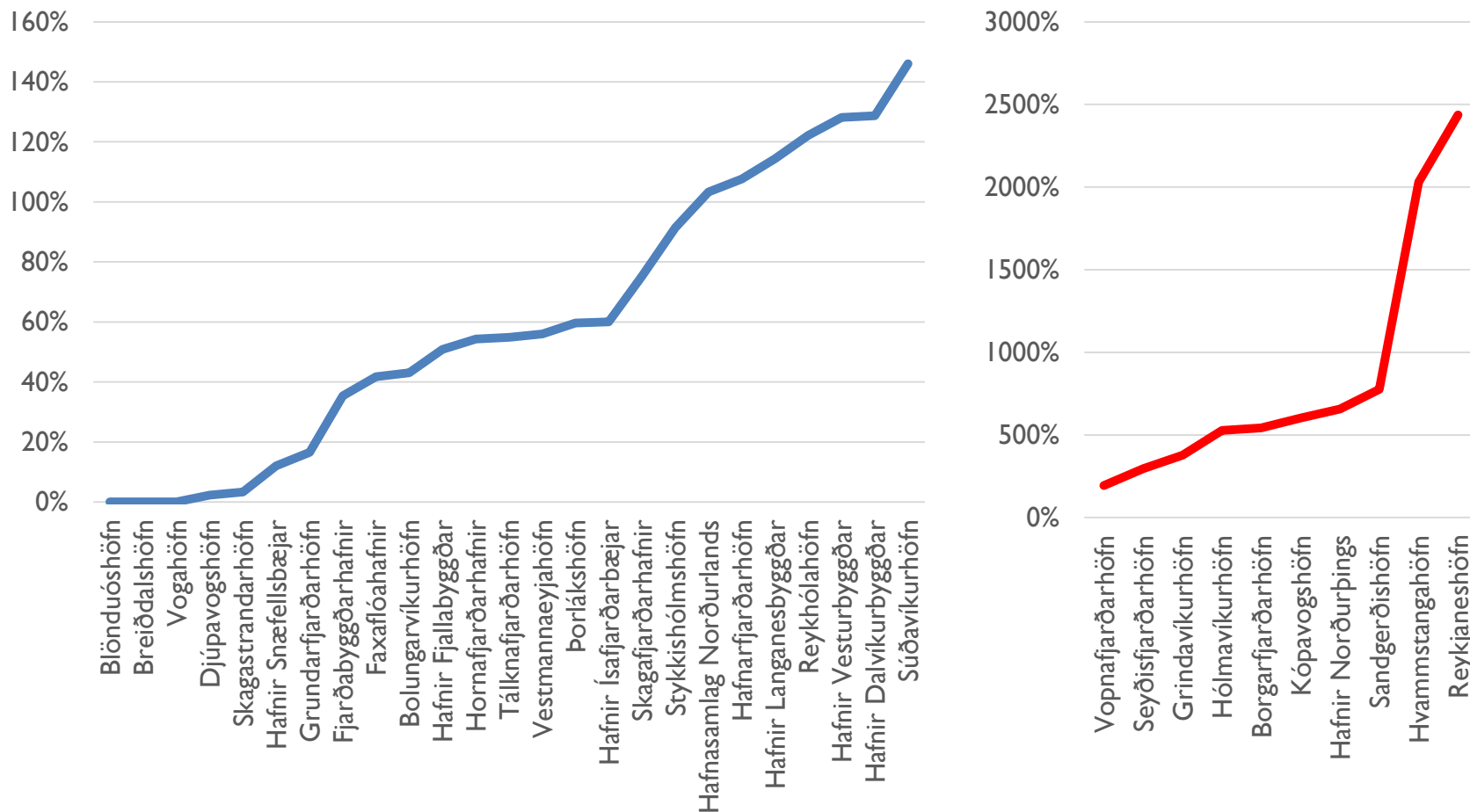


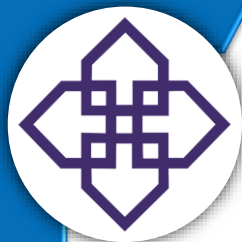
# SKULDIR HAFA LÆKKAD Í HEILD





# MARGIR HAFNARSJÓÐIR SKULDA MIKIÐ



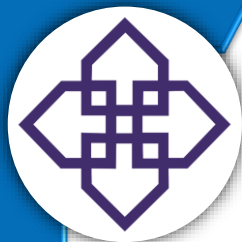


# HAFNARSJÓÐIR Í VANDA



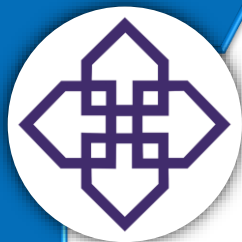
# SKULDAVANDI

	Skulda- hlutfall 2017	Breyting 2015-2017		
		Tekjur	Skulda- hlutfall	Fasta- fjármunir
Borgarfjarðarhöfn	543%	-12%	467%	125%
Hólmavíkurhöfn	528%	-11%	115%	-6%
Seyðisfjarðarhöfn	296%	13%	-92%	56%
Vopnafjarðarhöfn	194%	-1%	-33%	27%
Allir hafnarsjóðir	190%	15%	-11%	12%



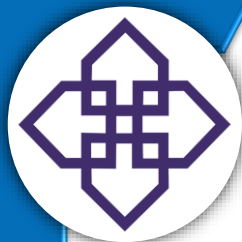
# NEIKVÆTT EIGIÐ FÉ OG SKULDAVANDI

	Eiginfjár- hlutfall	Skulda- hlutfall	Breyting 2015-2017		
			Tekjur	Skulda- hlutfall	Fasta- fjármunir
Grindavíkurhöfn	-42%	378%	-29%	152%	31%
Hafnir Norðurþings	-26%	657%	242%	-626%	251%
Kópavogshöfn	-16%	602%	189%	-1148%	4%
Sandgerðishöfn	-194%	478%	-19%	4%	-4%
Allir hafnarsjóðir	55%	190%	15%	-11%	12%



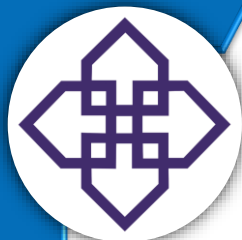
# SKULDAVANDI, NEIKVÆTT EIGIÐ FÉ OG VELTUFÉ

	Veltufé frá rekstri	Eiginfjárhlutfall	Skuldahlutfall	Breyting 2015-2017		
				Tekjur	Skuldahlutfall	Fastafrármunir
Hvammstangahöfn	-24%	-651%	2029%	-11%	287%	-13%
Reykjaneshöfn	-58%	-213%	2436%	48%	-732%	-3%



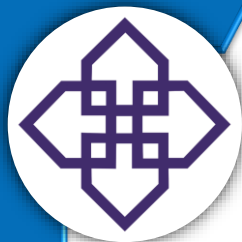
**NÆSTU ÁR**





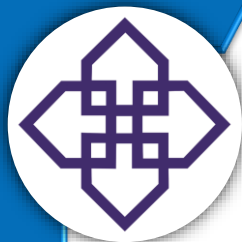
# FJÁRHAGSÁÆTLANIR 2018

	Árs- reikningur 2017	Fjárhags- áætlun 2018	Fjöldi hafnar- sjóða
<b><i>Breyting milli ára</i></b>			
Tekjur	8,4%	3,8%	35
Aflagjöld	-15,1%	10,7%	30
Fjárfesting	4%	14%	24
<b><i>Hlutfall af tekjum</i></b>			
Rekstrarafgangur	14,7%	20,5%	35
Veltufé frá rekstri	35%	40%	28
Fjárfesting	-39%	-43%	24
Skuldir og skuldbindingar	196%	181%	29



# FYRIRHUGAÐAR FRAMKVÆMDIR

<b>m.kr.</b>	<b>2018</b>	<b>2019</b>	<b>2020</b>	<b>2021</b>
Fyrirhugaðar framkvæmdir	5.039	7.235	6.247	5.853
Áætlaðar endurgreiðslur	789	1.395	1.046	1.119
Nettó	3.881	5.354	4.855	4.584



**TAKK FYRIR**